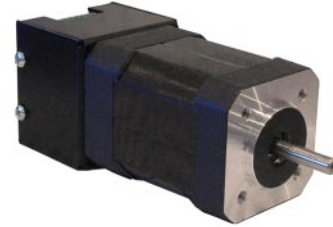


FEATURES

- Constant Velocity Mode Within 5%
- 400 - 4000 RPM Speed Range
- 0.5V to 5V External Voltage Speed Control
- 2-Quadrant Operation
- Short Circuit Protection
- Maximum Current Limit Setting at 10.0 Amps Peak
- Open Drain Speed Out
- Run / Stop and Direction Inputs
- TTL-CMOS Compatible Inputs
- Compact Size
- Screw type Terminal Block

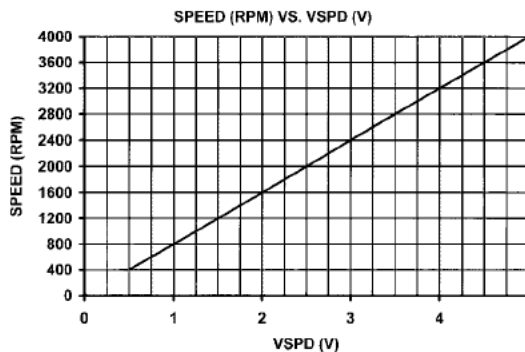


DESCRIPTION

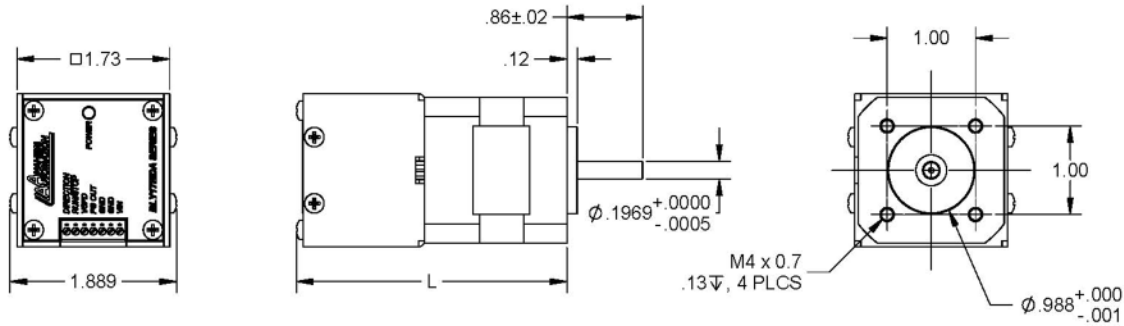
The BLY17MDA Series is a compact construction that implements a DC Brushless controller and a DC Brushless motor in one streamline package. With the two parts combined into one casing, the need to wire up the motor has been eliminated. The DC Brushless controller operates off 24VDC. The high-speed DC Brushless motor can operate at 4000RPM, can generate up to 35.4oz-in of continuous torque, and deliver as much as 105W, with the BLY17MDA4 offering. Using hall sensor feedback, the DC Brushless controller operates in a constant velocity mode within 5%. The driver is protected against over current (cycle-by-cycle), hall sensor error and under voltage. An external potentiometer (10K) or external voltage (0.5-5VDC) can be used to control the speed. The direction of the motor can be preset by the direction control input. A Brake function can be done by grounding the Run/Stop input.

SPECIFICATIONS

Model #	No Load Speed (RPM)	Rated Speed (RPM)	Torque (oz-in)	Rated Power (W)	L Length (Inch)
BLY17MDA1-24V-4000	6200	4000	8.9	26	2.975
BLY17MDA2-24V-4000	6200	4000	17.7	52	3.775
BLY17MDA3-24V-4000	6200	4000	26.2	78	4.575
BLY17MDA4-24V-4000	62000	4000	35.4	105	5.275



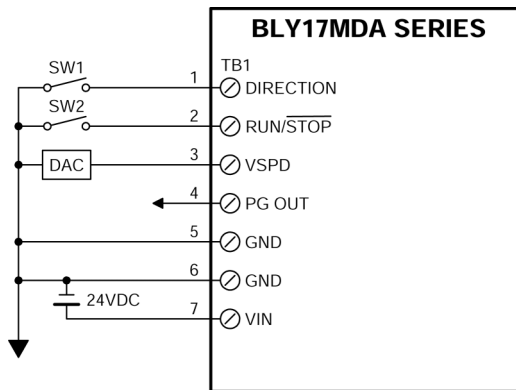
L010482



*All units are in inches

DIMENSION

Pin #	Description
1	Direction
2	Run / Stop
3	Vspeed
4	PG OUT
5	AGND
6	PGND
7	VIN (9-35VDC)



TB1: Power In, Control Inputs and Outputs

WIRING INFORMATION

Winding Type :	Delta, 8 Poles	Max Radial Force :	6.29 lbs @ 10mm from Flange
Hall Effect Angle :	120 Degree Electrical Angle	Max Axial Force :	2.25 lbs - Force
Shaft Run Out :	0.025mm	Insulation Class :	Class B
Radial Play :	0.02mm@450g	Dielectric Strength :	500VDC for one minute
End Play :	0.08mm@450g	Insulation Resistance :	100Mohm, 500VDC

SPECIFICATIONS