

BLU09 - Brushless Motors



FEATURES

- **Size 09 BLDC Motor**
- **High Speed Motor**
- **Compact Size and Power Density**
- **Cost Effective Solution**
- **Long Life and Highly Reliable**
- **Cost Effective Replacement for Brush DC Motors**
- **Can be Customized for**
 - **Maximum Speed**
 - **Winding Current**
 - **Shaft Options**
 - **Cables and Connectors**



DESCRIPTION

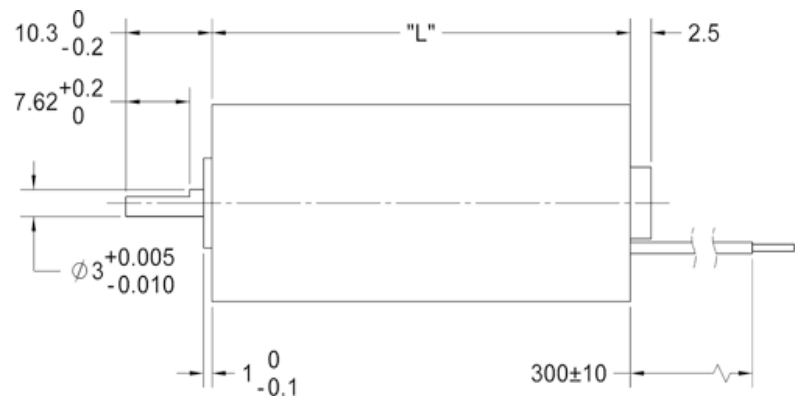
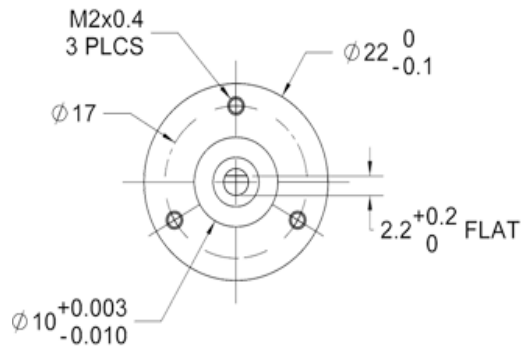
The BLU09 Series Brushless DC Motors come in a compact package with high power density. These motors are cost effective solutions to many velocity control applications. The sensor-less feature can help simplify your design. With its small footprint, it is great for compact applications. We can also customize the windings to perfectly match your voltage, current, and maximum operating speed. Special shaft modifications, cables and connectors are also available upon request.

SPECIFICATIONS

Model #	FRAME Size	Rated Voltage (V)	Max Speed (RPM)	Rated Power (W)	Peak Torque (oz-in)	Peak Current (A)	Line to Line Resistance (ohms)	Line to Line Inductance (mH)	Torque Constant (oz-in/A)	Weight (lbs)	"L" Length (in)
BLU092S-24V-14400	09	24	18000	22	3.68	2.75	5.30	0.34	1.76	0.16	1.69
BLU093S-24V-34400	09	24	40000	75	4.94	4.75	0.90	0.05	0.80	0.2	1.96

Notes: Custom leadwires, cables, connectors, and windings are available upon request.

L010578



DIMENSIONS

Phases	
RED	U
BLK	V
WHT	W

Hall	
Green	Hall power
Blue	Hall Gnd
Brown	Hall A
Yellow	Hall B
Orange	Hall C

WIRING INFORMATION

Winding Type:	3 Phase, Y Connection	Insulation resistance:	200M Ohm
Shaft run out:	0.02mm	Insulation class:	Class F
Radial Play:	0.01mm	End Play:	0.1mm
Maximum Radial Force:	16N	Maximum Axial Force:	4N
Dielectric strength:	500V		

SPECIFICATIONS